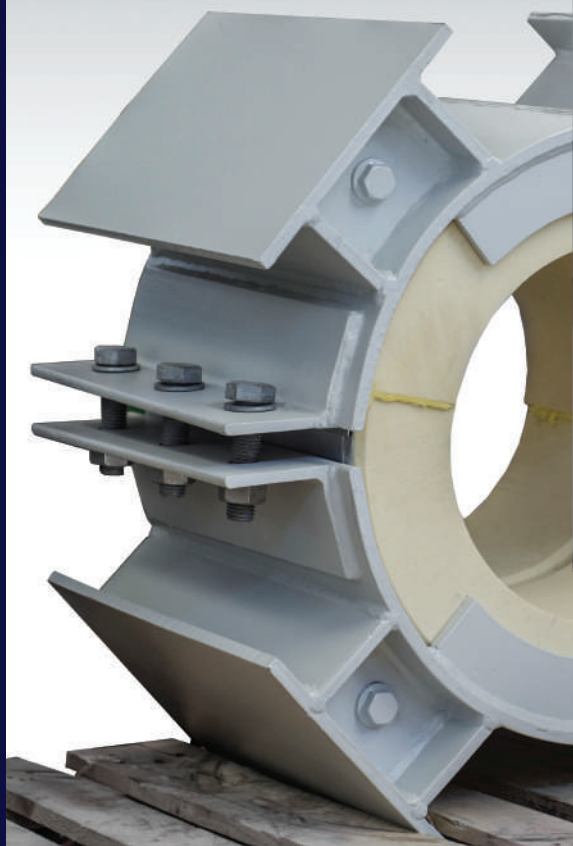


CRAD-XTM

INSULATED PIPE SUPPORTS

160

CRAD-XTM



MISALLA
INDUSTRY & CHEMICALS

Misalla Industry & Chemicals

CONTACT

Tel. (+203)4263588
(+20)1154452494
Fax. (+203)4263589

Mail: info@misalla.com
Website: www.misalla.com

Office Address: St. 20, Smouha
Green Towers, Tower no. 4, Smouha,
Alexandria - Egypt.

Factory Address: Petrochemical Rd.
Merghem Amria - Alexandria - Egypt



CRAD-XTM

160 HIGH DENSITY POLYURETHANE FOAM PIPE SUPPORTS

HIGH DENSITY POLYURETHANE FOAM PIPE SUPPORTS

PROPERTIES	TEST METHOD	VALUE
Density	ASTM D1622	160 Kg/m ³
Compressive Strength (At 20°C)	ASTM D1621	2.035 Mpa
Compressive Strength (At -160°C)	ASTM D1621	3.3 Mpa
Tensile Strength (At 20°C)	ASTM D1623	3.204 Mpa
Tensile Strength (At -160°C)	ASTM D1623	9.8 Mpa
Closed Cell Content	ASTM D2856	95%
Thermal Conductivity @ 20°C	ASTM C177	0.035 W/m.k
Thermal Conductivity @ -160°C	ASTM C518	0.031 W/m.k
Leachable Halides	ASTM D871	Less than 20 Ppm
Water Absorption	ASTM C2842	1.03 (Max. Vol%)

CRAD-XTM 160X

Revision: 03

Issued: 2021



TEL. (+203) 4263588
(+20) 1154452494
FAX. (+203) 4263589

OFFICE ADDRESS St. 20, Smouha Green Towers, Tower no. 4 ,
Smouha, Alexandria - Egypt.

FACTORY ADDRESS Petrochemical Rd. Merghem Amria -
Alexandria - Egypt

MAIL info@misalla.com

WEBSITE www.misalla.com